

Standby Instruments

A set of realistic Standby Instruments for your Airline Cockpit controlled by Microsoft FS2002, FS2004 or X-Plane

Plug and Play

TRC Development has produced a special set of Standby Instruments, to complete your glass cockpit. The instruments are especially designed to be controlled by Microsoft Flight Simulator FS2002/FS2004 (for 2004, the payware version of FSUIPC from Pete Downson is required) and are driven by electronics and servo motors.

Upon your choice, you can buy the set of Standby Instruments as a kit, or completely assembled and tested to install "Plug and Play" in your cockpit.

Kit or Ready to use

The Set of Standby Instruments is available as kit, or as ready to use instruments. The kit contains everything to build the instruments yourselves, except the standard servomotors, which are offered separately or they can be acquired at your local model parts shop. Parts are made from high quality ABS plastics and fit perfectly. Each product comes with an illustrated construction manual and the construction does not require technical knowledge.

Controlled from Flightsimulator

The Standby Instruments are connected to the S.I.C. (Standby Instruments Controller), a small electronics board - which on its turn connects to the PC where the flight simulator software is running - via a USB connector.

Attitude Indicator

The indicator is equipped with 2 servomotors*) and indicates roll (up to 95 degrees left and right) and pitch. The indicator is equipped with back light.

Airspeed Indicator

The indicator goes up to a maximum of 450 Knots and is equipped with a single servo motor*). The indicator and is equipped with back light.

Altimeter

The indicator has pointers for 100, 1000 and 10,000 feet and is available with an Inches pressure scale or a Millibar pressure scale (Europe) upon demand. With the knob, the pressure scale can be adjusted. The indicator and is equipped with back light and is equipped with 2 servo motors*).

Heading Indicator

The heading Indicator is equipped with a single servo motor*) and can be adjusted to the right course by using the adjust knob. The indicator can be featured with a heading bug on demand (included in the kit). The indicator is equipped with back light.

Wet Compass

An original Wet Compass, extended with electronics to be driven from Microsoft Flight Simulator. The Compass is only available as built and tested product. The Compass is equipped with back light.

How to buy?

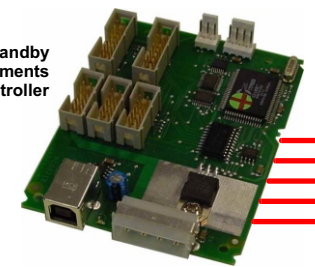
You can order the instruments on the SimKits website as you like and compose your own set of standby instruments.

Software Development Kit available

The instruments (built or in kit form) do not require any programming knowledge. For programmers who want to use the instruments with other flight simulator software than Microsoft FS2002/2004, a SDK (Software Development Kit) is available at no charge.

www.simkits.com

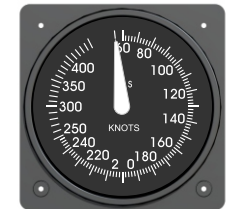
Standby Instruments Controller



Attitude Indicator



Airspeed Indicator (450Knots)



Altimeter (Inches or Millibar Pressure Scale)



Heading Indicator



Wet Compass



*) Servomotors are not included when the product is ordered as kit and need to be purchased separately.